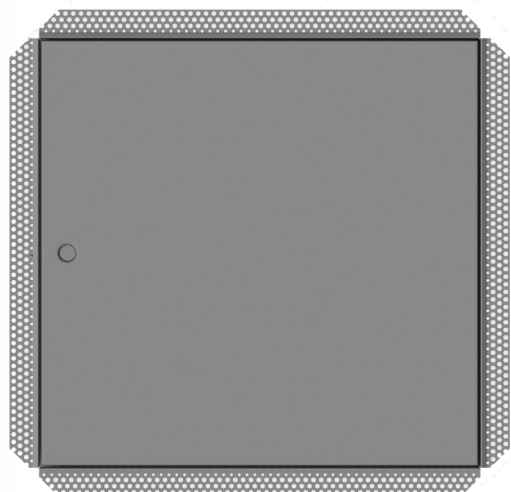


Metal Door Slimline Flanged



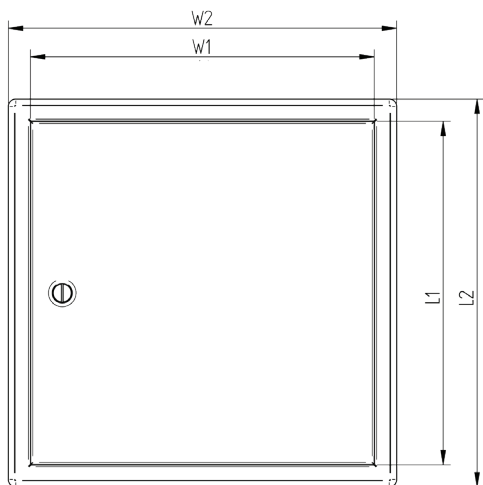
Metal Door Slimline Set Bead

slimline access panels

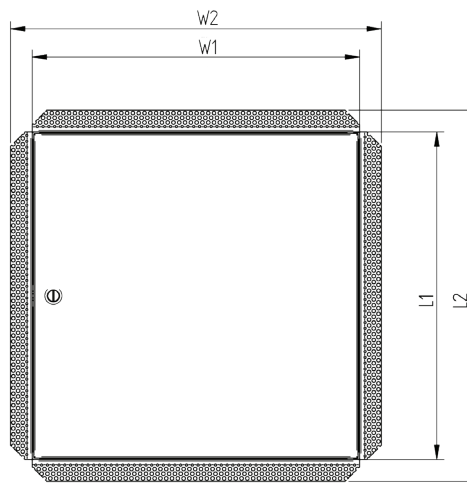
key benefits

- high durability and corrosion protection
- flanged surround for easy installation
- set bead surround for a flush set finish
- fixing tabs providing secure fastening positions for installation in walls and ceilings
- four bendable ears for fixings screws
- slotted lock
- safe to install
- available in different sizes

slimline steel access panels are produced from 1mm galvanised steel and can be used for any basic application. Siniat **slimline** steel access panels feature fixing tags which provide secure fastening positions for installation in walls and ceilings.



Metal Door Slimline Flanged



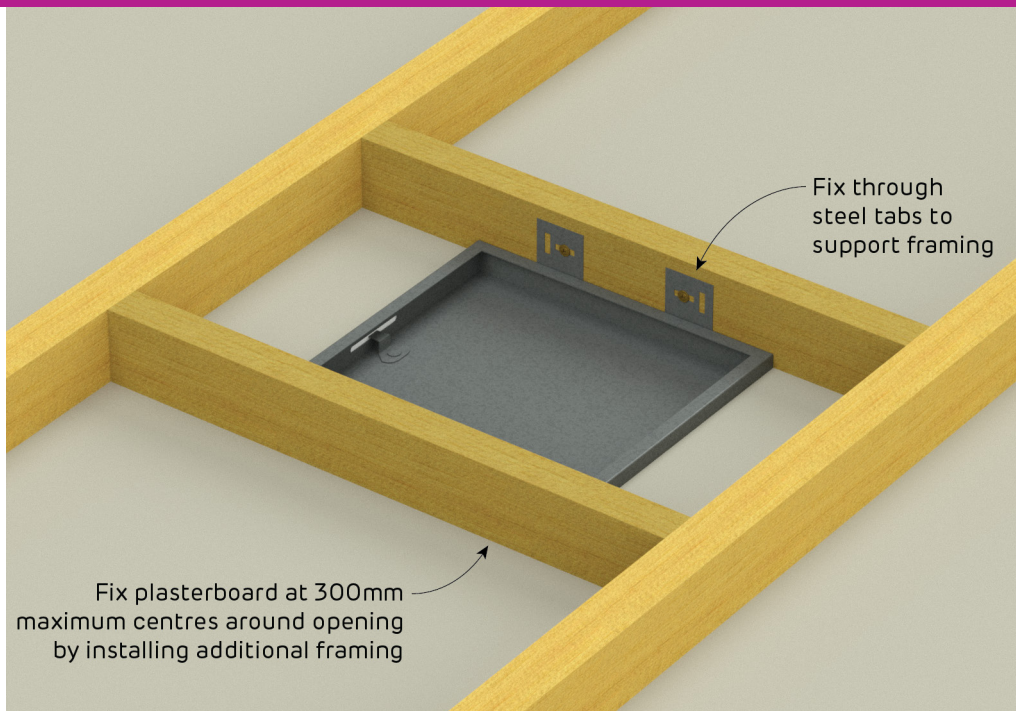
Metal Door Slimline Set Bead

product information

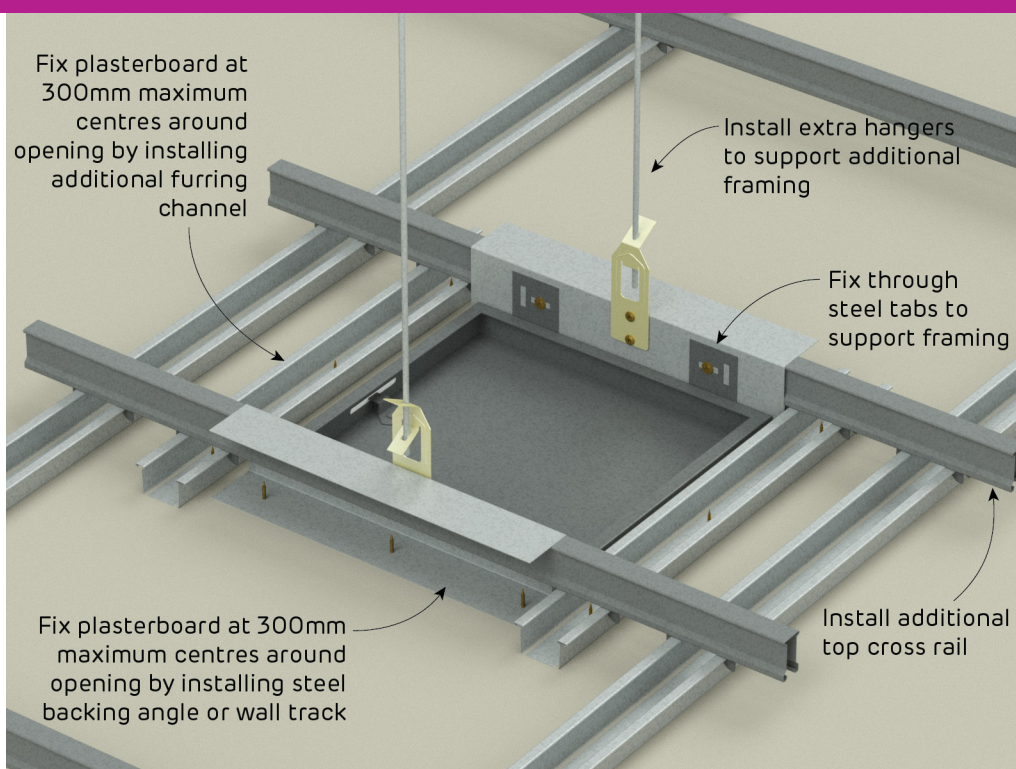
name	width (mm)	length (mm)	opening size w1x11 (mm)	overall size w2x12 (mm)	weight (approx. kg/pc)	product code
metal door flanged	200	200	195 x 195	258 x 258	1	APMDFL20
	300	300	295 x 295	358 x 358	1.5	APMDFL30
	450	450	445 x 445	508 x 508	3	APMDFL45
	530	530	525 x 525	588 x 588	4.5	APMDFL53
	600	600	595 x 595	658 x 658	5	APMDFL60
metal door set bead	200	200	195 x 195	258 x 258	1	APMDSB20
	300	300	295 x 295	358 x 358	1.5	APMDSB30
	450	450	445 x 445	508 x 508	3	APMDSB45
	530	530	525 x 525	588 x 588	4.5	APMDSB53
	600	600	595 x 595	658 x 658	5	APMDSB60

installation

timber ceiling installation

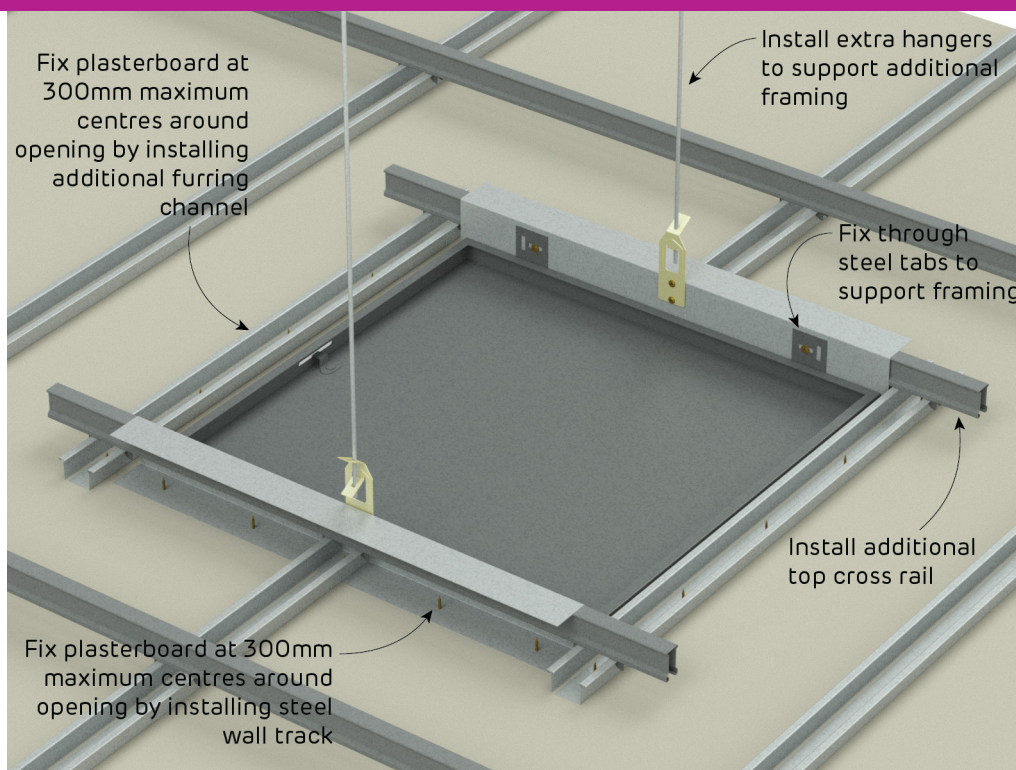


suspended ceiling frame with small access panel

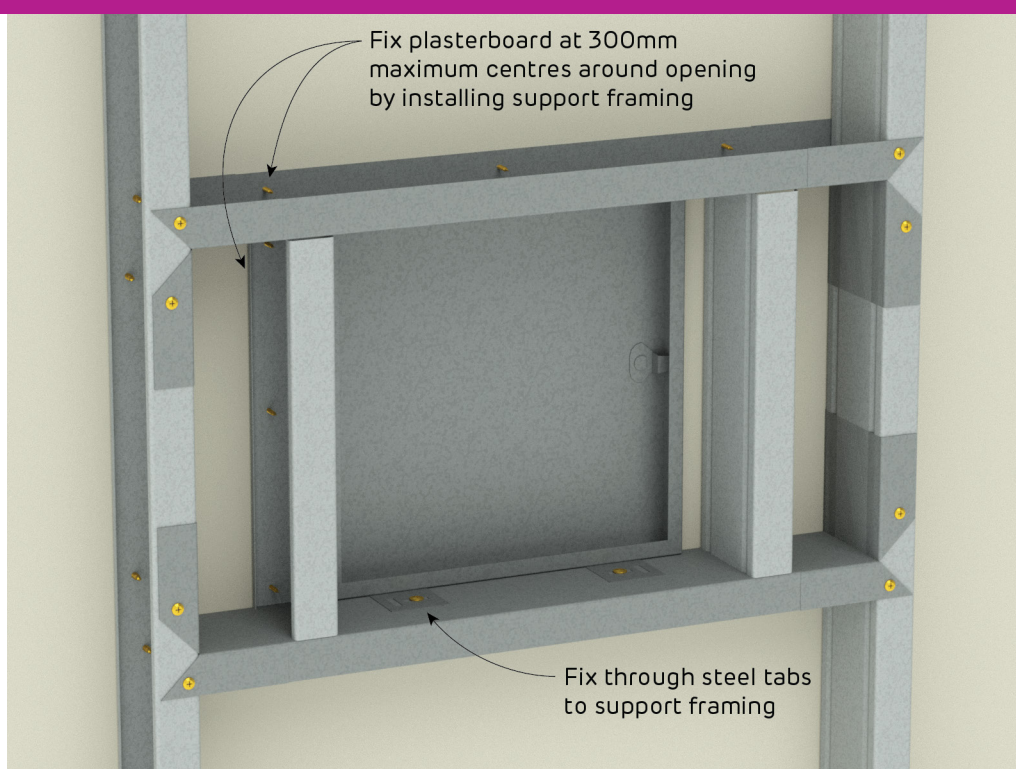


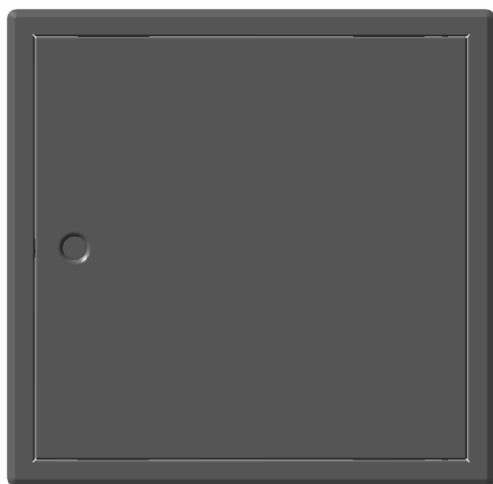
installation

suspended ceiling frame with large access panel

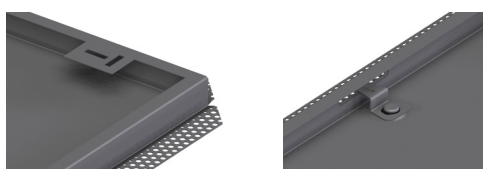
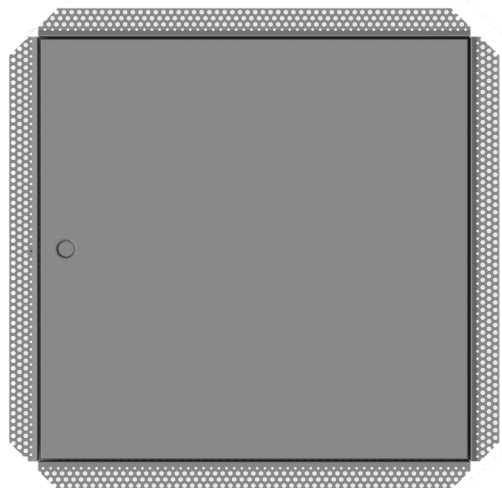


wall frame - timber stud or steel stud





Metal Door Slimline Flanged



Metal Door Slimline Set Bead

product information

When framing the opening allow for a fitting tolerance of 5mm on each side e.g. for 300mm x 300mm panel allow for a clear opening that is 10mm larger such as 310mm x 310mm.

Ensure that the panel you have selected is appropriate for the application.

Do not install standard slimline panels in fire rated walls or ceilings.

slimline access panels and the associated installation detail are relevant for openings that are intended for maintenance access to services immediately or within arms length from the room side of the panel. The access panel and the installation detail are not suitable for openings intended as manholes where a person may be expected to climb through the opening or support their weight on the frame of the panel in any manner.

Siniat **slimline access panels** feature fixing tabs which provide secure fastening positions for installation in walls and ceilings.

This information sheet includes fixing detail for the most common applications.



Quality
ISO 9001
SAI GLOBAL

All Siniat products have been developed to meet the specific needs of the Australian market. Products manufactured in Australia comply with quality systems certified as complying with AS/NZS ISO 9001:2008 and meet the requirements of AS/NZS 2588, Gypsum Plasterboard.



The following Siniat products have been independently certified by Global GreenTag to GreenRate Level A: **mastashield**, **fireshield**, **fireshield h**, **soundshield**, **watershield**, **spanshield**, **multishield**, **curveshield**, **opal**, **trurock** and **trurock hd**. Compliance certificates are available on siniat.com.au.



All Siniat plasterboard and metal products are available on the Siniat Carbon Neutral Opt-In program to help you meet your sustainability goals. Visit siniat.com.au to find out more.

Disclaimer

Products manufactured and systems designed by Etex Australia Pty Ltd and branded Siniat, are produced in accordance with the Building Code of Australia and relevant Australian Standards. Information in this document is to be used as a guide only and is subject to project approval as many aspects of construction are not comprehensively covered. It is also the responsibility of the project to determine if Siniat's products and systems are suitable for the intended application. Etex Australia Pty Ltd will not be held responsible for any claims resulting from the installation of its products or other associated products not in accordance with the recommendations of the manufacturer's technical literature or relevant Australian Standards. Siniat technical information is regularly updated. To ensure this document is current with the latest information, visit siniat.solutions

Siniat.solutions provides a host of online solutions for your product

siniat SELECT®

offers an online system selector and custom design specification proposal, developed by us and catered to your project's requirements.

siniat CALCULATE®

is a range of online calculation tools for the professional. Explore siniat.solutions on siniat.com.au.



Etex Australia Pty Ltd

ABN 61 003 621 010
31 Military Road, Matraville
NSW 2036

siniat.com.au



warranty

Siniat's products are guaranteed by a 10 Year Warranty. For details visit siniat.com.au

technical advice
AU 1300 724 505